



Attic staircases and flat-roof hatches



highly-insulated



safe



durable

Safe step up



Maximum comfort, optimum use of space and the highest safety standards.



Robert Wipplinger

The wishes of our customers as well as constantly growing technical requirements are our motivation and our mission for the production of high-quality attic staircases – for more than 60 years.

In order to be able to rely on the high quality standards of our products even in such important quality criteria as fire retardancy or thermal insulation, our attic staircases are continuously tested and certified by independent institutes.

Wipplinger Robert



TU Graz
Prüfbericht Nr.
B16.023.001.111



Klimatec 160
Passive House Institute
Dr. Wolfgang Feist
64283 Darmstadt
Germany



Class 4
Test No.: 12-001746-PR03



ÖNORM EN 1363
ÖNORM EN 1634
ÖNORM B3860



ÖA Nummer:
R-14.1.3-15-14763
R-14.1.3-15-14885
E-14.1.3-14-7614
R-14.1.3-17-14887
E-14.1.3-10-7613
R-14.1.3-17-14886
E-14.1.3-10-7612

Wipro attic staircases are...

- tested and monitored by independent test institutes according to ÖNORM EN 1363, ÖNORM EN 1634 and ÖNORM B3860.
- marked with the ÜA seal by independent testing institutes.
- registered and recognized in the Austrian list of building materials.

Klassifikation:
E1,30
E1,60
E1,90-C
E1,30
E1,30
E1,30
E1,30

Type:
GM4 Isotec Luxe 200
GM4 Isotec 200
GM4 Isotec
GM4 Isotec
GM4 Isotec Luxe
Klimatec 160
GM4 Eurostep



Wipro attic staircases

Quality „Made in Austria“



- Technically sophisticated
- Purposefully built
- Easy and convenient to use
- Durable, robust and stable
- Safe and functional
- Fire-retardant and heat-insulating
- As good as maintenance-free
- Solid accessories
- Airtight closure
- Many individual designs
- Telescopic spring support in the handrail
- Ball-bearing closing mechanism
- Pre-assembled
- User- and assembly-friendly



Successful blower-door test while using a Wipro air seal set and correct assembly (on certain models)



EI₂30 to EI₂120 – fire retardant from 30 to 120 minutes according to test report and production monitoring; ÜA certified and registered in the Austrian building material list (depending on type)



Energy subsidies in many states thanks to the classification as an energy-saving measure through double-layer systems and high thermal insulation values



Electric drive (can not be retrofitted!)



QR-Codes bring you directly to the respective product information on our homepage.

**Fire-retardant
 up to 120 minutes**



Depending on the model, Wipro loft ladders are fire-retardant for 30, 60, 90 or 120 minutes.

**Best insulation
 value**



KLIMATEC 160 | U_D -value = 0,34 W/m²K

total component tested by Passivhaus Institut Darmstadt according to Certificate No. 0836as01

Wippro attic staircases

Perfection down to the smallest detail.

ASSEMBLY + SPECIAL SIZES

- **Wippro attic staircases** are delivered completely assembled and ready for installation
- **Installation instructions with mounting material for concrete or wooden ceilings** included
- **Standard sizes available immediately**
- **Custom-made** versions possible
- **Height of hatch can be ordered individually**
- **Ball-bearing closing mechanism**

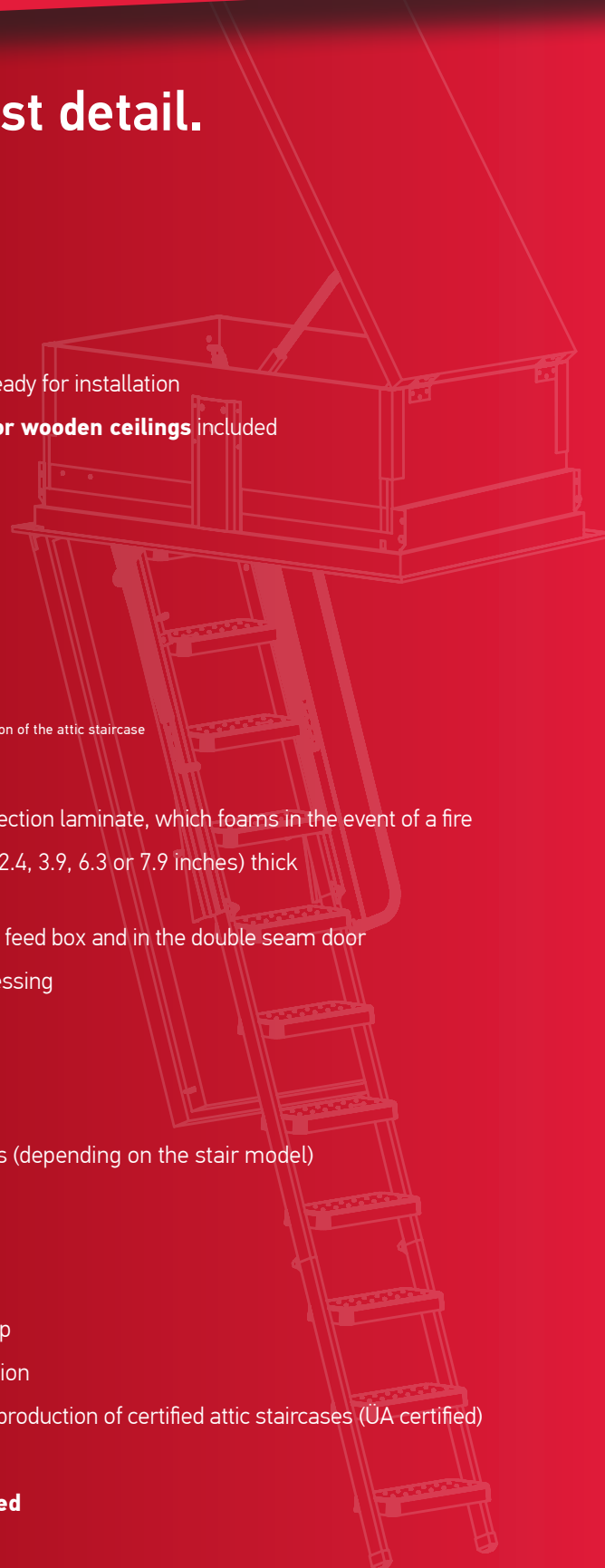
HEAT INSULATION

Depending on the selected stair type or individual configuration of the attic staircase

- **Special top cover** for perfect thermal insulation (optional)
- **Circular seals made** of plastic hollow chamber profiles and fire protection laminate, which foams in the event of a fire
- **Optimum thermal insulation values** due to 6, 10, 16 or 20 cm (≈2.4, 3.9, 6.3 or 7.9 inches) thick insulation in the lower cover – depending on the stair model
- **Best thermal insulation values** through thermal separation in the feed box and in the double seam door
- **Air-tightness class 4** thanks to ingenious design and perfect processing

SAFETY AND QUALITY ASSURANCE

- **EI₂30, EI₂60, EI₂90 or EI₂120** fire-retardant from 30 to 120 minutes (depending on the stair model)
- **Anti-slip knobs** on the treads
- **High-quality plastic powder-coated surface**
- **High step load** as per ÖNORM test up to max. 250 kg (total)
- **Large treads** – 36 cm (≈14.2 inches) wide x 12 cm (≈4.7 inches) deep
- **Extra long handrail with telescopic support** for easy stair operation
- **External monitoring and internal quality assurance** during the production of certified attic staircases (UA certified)
- **Thermal separation**
- **4 cm (≈1.6 inches) frame for covering the wall hole fix integrated**
- **Stairs mainly maintenance-free**



... made by our professionals.



Isotec 200

Frame
height
52cm

Promoting
energy-saving
measures!

Tested protection against heat loss.

The Isotec 200 closes the energy loss gap between living area and attic. All-round sealed, this attic staircase protects against roof heat loss of living rooms and is **permanently sealed**.

- **60 minutes fire-retardant**
EI_{2,60} tested according to ÖNORM 3860, EN 1634-1, EN1363-1
- **Heat transfer coefficient in the lower cover: $U = 0,17 \text{ W/m}^2\text{K}$**
(calculated) by TU Graz No. B12.137.002.484
- **Heat transfer coefficient with thermally insulated top cover: $U = 0,13 \text{ W/m}^2\text{K}$**
(calculated) by TU Graz No. B12.137.004.484
- **Air tightness class 4 tested**
according to DIN EN 12114 by IFT Rosenheim according to test report No. 12-001746-PR04
- Stone wool insulation 20 cm (≈ 7.9 inches), multi-layer insulation in the lower cover
- Telescopic handrail, ball bearing with wear-free closing mechanism
- Studded treads with a width of 36 cm (≈ 14.2 inches) x 12 cm (≈ 4.7 inches)
- High-quality powder coated surface
- Infinitely variable adjustment to the room height
- Recessed rotary hinges
- 3 high-quality sealing layers
- For available sizes (p. 21)



20 cm (≈ 7.9 inches) thick, multi-layered thermal insulation in the lower cover



Isotec 200
+
Wipro
upper cover

+ 6 cm (≈ 2.4 inches) thermal insulation in the upper cover (optionally available)



The Isotec 200 separates the attic for many decades with energy-saving and fire-retardant properties.

Klimatec 160



U_D -value = 0,34 W/m²K

total component tested by Passivhaus Institut Darmstadt according to Certificate No. 0836as01

The ideal solution for highly insulated ceilings.

Like all Wipro products, the high-quality Klimatec 160 attic staircase is designed for long-term use. It convinces with comfort-supporting details as well as with best comfort and hygiene criteria.

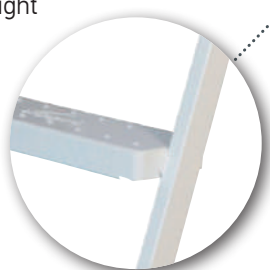
- **30 minute fire-retardant**
EI₂30 tested according to ÖNORM 3860, EN 1634-1, EN1363-1
- **Thermally separated hatch panel**
- **With optional air tight set ideally suited for Passive Houses**
- **Air tightness class 4 tested**
according to EN12114 and EN 1026 by TU Graz according to test report No. B16.023.001.111
- **Three circumferential seals**
- high-quality powder coated surface
- Frame height 48 cm (≈18.9 inches) – higher available on request
- **Klimatec 160 smart: 35 cm (≈13.8 inches) frame height also higher available**
- All standard sizes are stocked and immediately available
- Can be installed in the ceiling panel
- Includes mounting accessories and instructions
- Infinitely variable adjustment to the room height
- Tread size: (width x depth) 36 cm x 12 cm (≈14.2 x 4.7 inches)
- Internal swivel mechanism
- Top cover can be retrofitted at any time
- Ball-bearing closing system
- Rounded protection caps
- Telescopic handrail
- Upper step in the staircase
- For available sizes (p. 21)



Top step in the staircase for low exit height



Spring-loaded, easy-to-close closing mechanism



Wide stair treads with security depth



Telescopic handrail



Rounded protection caps



CERTIFIED
passive house
component

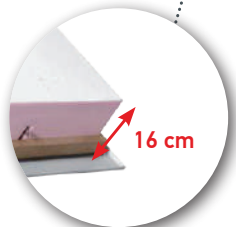


48 cm (≈18.9 inches)
high frame
higher on request
available



Ball-bearing rail guide and adjustment
to room heights with the help of
adjusting screws

Klimatec 160 smart



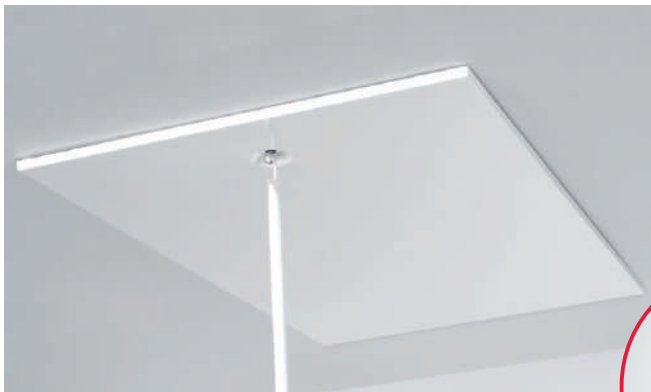
16 cm (6.3 inches) thermal
insulation in the lower cover



35 cm (≈13.8 inches)
high frame
higher on request
available

Upper step in the staircase

Seamless view of the Klimatec 160 attic staircase
through innovative lower cover



For comparison
attic staircase without
seamless view



Certificate
Certified Passive House Component
for arctic climate, valid until 31.12.2018

Passive House Institute
Dr. Wolfgang Feist
64283 Darmstadt
GERMANY

Category: Attic staircase
Manufacturer: WIPPRO Wipplinger Ges.m.b.H & Co.KG
4191 Vorderweissenbach, AUSTRIA
Product name: KLIMATEC 160

This certificate was awarded based
on the following criteria:

A given component size of 1.40 m by 0.70 m results in:

$U_D = 0.34 \text{ W/(m}^2\text{K)} \leq 0.60 \text{ W/(m}^2\text{K)}$

Taking the installation situations into account, the component
meets the following criterion:

$U_{D,installed} \leq 0.60 \text{ W/(m}^2\text{K)}$

Functional requirements of hygiene:
 $f_{Rsi} = 0.25 \text{ m}^2\text{K/W} \geq 0.60$

Following thermal bridge coefficients Ψ [W/(mK)]
have been determined:

	Wooden beam ceiling	Concrete ceiling	Concrete ceiling with base
Thermal bridge coefficient Ψ [W/(mK)]	0.04	0.08	0.05
$U_{D,installed}$ [W/(m ² K)]	0.52	0.70	0.57

Description

Attic stairs of wooden composite material. Trap door with insulation of extruded polystyrene ($\lambda = 0.035 \text{ W/(mK)}$) and coating of sheet metal, 3-level airtightness-sealing (EPDM, TPE) and surrounding insulation of mineral wool ($\lambda = 0.035 \text{ W/(mK)}$). Installation in arctic climates requires installation frame for concrete-ceilings.

Please ask the manufacturer for a detailed report containing all calculations and results.

www.passivehouse.com 00364401

arctic climate
CERTIFIED COMPONENT
Passive House Institute



3 high-quality sealing layers

Wipro air-tight set

Recommended for optimal
installation and best sealing
(see page 19 for more information)



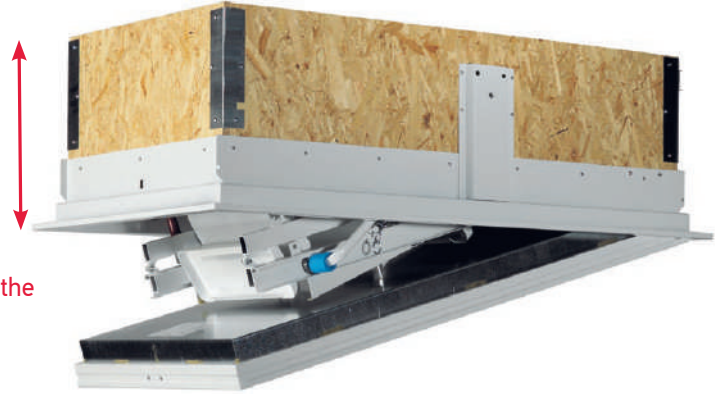
Isotec and Isotec Luxe



Frame made of high-quality OSB material and welded full-frame, thermally separated.

The innovation from Wipro.

42 cm
(≈16.5 inches)



High-quality attic ladder with 10 cm (≈4 inches) thermal insulation in the lower cover and thermally separated frame.

Height of frame: 42 cm (≈16,5 inches) higher available on request

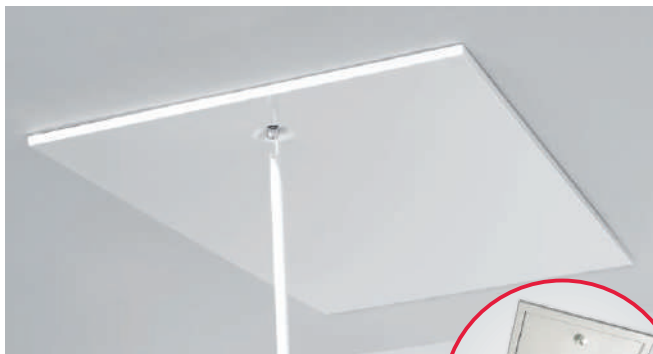
Isotec
Strong in fire inhibition

30, 60, 90 and 120 minutes fire protection
EI₂60, EI₂90, EI₂120 optional available



Isotec Luxe seamless view from bottom for perfect optics

fire protection EI₂30 tested



Modern view
by innovative lower cover



Optimal installation in plasterboard covers
beautiful in either concrete or brick ceilings / gypsum board



For comparison attic staircase without seamless view



4 cm (≈1.6 inches) trim integrated in the frame



Surrounding fire protection seal, additional seals and double lip



Recessed hinges



Powder coated



10 cm (≈4 inches) thermal insulation in the lower cover with thermal separation

- **All standard sizes 30 minutes fire-retardant**
EI_{2,30} according to ÖNORM 3860, EN 1634-1, EN1363-1
model Isotec fire-resistant up to 120 minutes against surcharge.
- **Standard EI_{2,30} – optional available: EI_{2,60}, EI_{2,90} and EI_{2,120}**
- **Heat transfer coefficient in the lower cover: U = 0,33 W/m²K**
(calculated) by TU Graz No. B12.137.001.484
- **Heat transfer coefficient with heat insulated top cover: U = 0,21 W/m²K**
(calculated) by TU Graz No. B12.137.001.484
- **Air tightness class 4 tested**
according to DIN EN 12114 by the IFT Rosenheim according to test report No. 12-001746-PR03
- Surrounding fire protection seal + two extra seals in double lip
- 10 cm (≈3.9 inches) stone wool insulation in the double lip lower cover
- Safe access due to convenient deep treads, far enough from lower lid
- High-quality powder coated surface
- Large stair treads – 36 cm (≈14 inches) width x 12 cm (≈4.7 inches) depth
- All standard sizes in stock and immediately available
- Infinitely variable adjustment to the room height
- Installation in the ceiling panel possible
- Incl. mounting accessories and instructions
- Internal swivel mechanism
- Top cover can be retrofitted at any time
- Remote locking system integrable
- Completely assembled, ready for installation
- Telescopic handrail
- Upper step in the staircase
- For available sizes (p. 21)



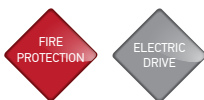
Isotec



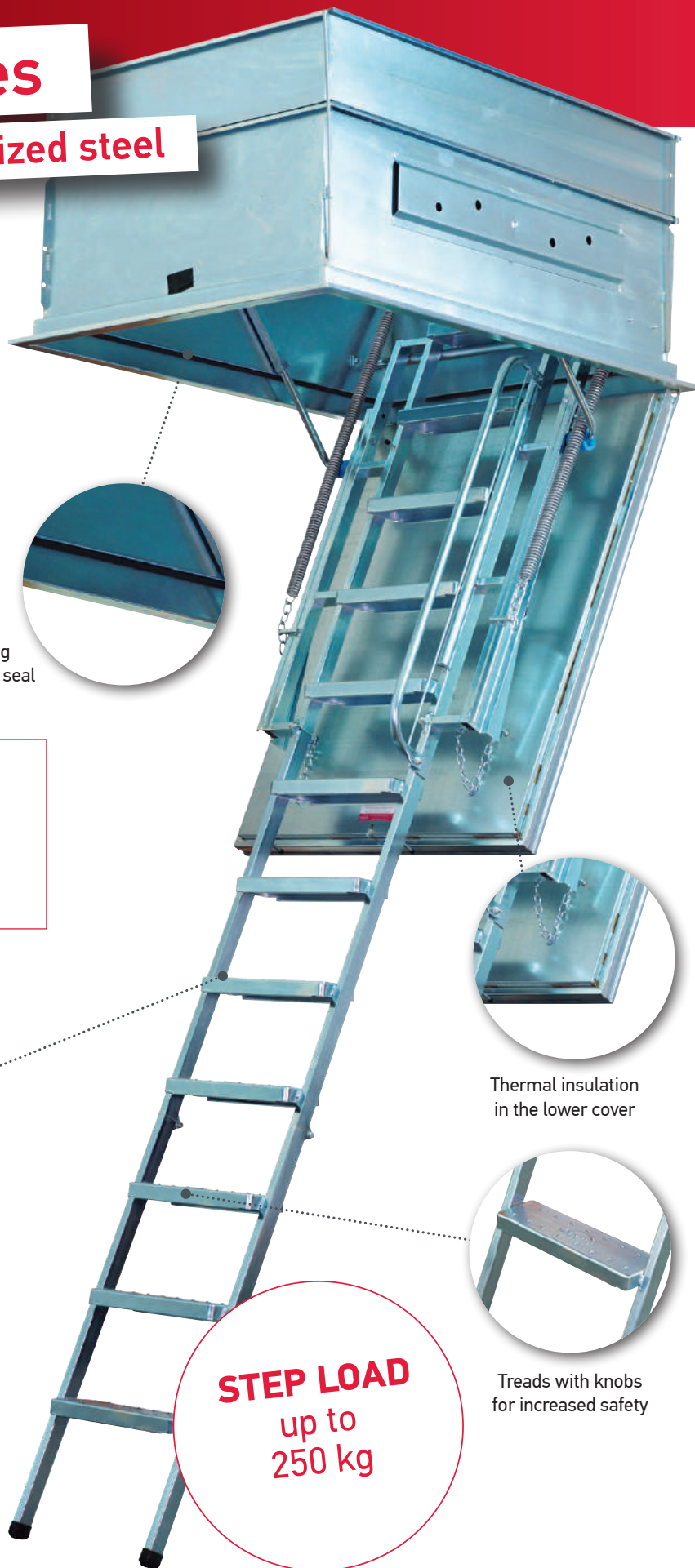
Isotec Luxe

Wipro staircases

also available from galvanized steel



The alternative to the powder coated attic staircase.



Surrounding fire protection seal

All Wipro models are also available in the galvanized version. Special dimensions (see illustration) on request.

Galvanized, large treads 36 cm (14.2 inches) wide x 12 cm (4.7 inches) deep

Thermal insulation in the lower cover

Treads with knobs for increased safety

STEP LOAD
up to
250 kg

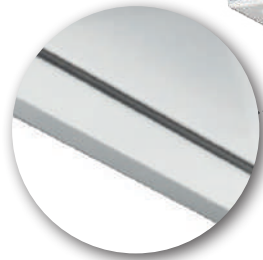


Eurostep

powder-coated



Practical handling.



Surrounding fire protection seal

Order **ELECTRIC DRIVE** in advance!

- **30 minutes fire-retardant**
EI₂30 tested according to ÖNORM 3860, EN 1634-1, EN1363-1
- **Heat transfer coefficient in the lower cover: $U = 0,7 \text{ W/m}^2\text{K}$**
(calculated)
- Thermal insulation by 6 cm (≈ 2.4 inches) Heralan rockwool layer in the lower cover
- 39 cm (≈ 15.4 inches) high welded fully mitred frame to cover the hatch
- Infinitely variable adaptation to the room height for standard stairs
- High-quality plastic powder surface coating
- Last stair step in the hatch case
- Recessed rotary hinges
- Internal swivel mechanism
- For available sizes (p. 21)

Large treads with high-quality plastic powder coating
39 cm (≈ 15.4 inches) width
x 12 cm (≈ 4.7 inches) depth



Ball bearing, wear-resistant closing mechanism and telescopic handrail



6 cm (≈ 2.4 inches) thick thermal insulation in the lower cover



Treads with knobs for increased safety

STEP LOAD
up to
250 kg

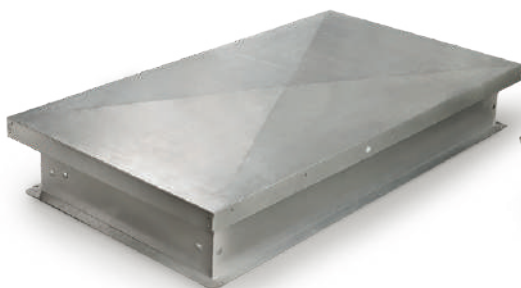
Flat-roof hatch

Perfectly
suitable for
every flat
roof

Uncompromised comfort and safety.

The „ready to install“ Wipro flat-roof hatch guides comfortably to the roof and, in addition to a high degree of safety, offers many other important advantages:

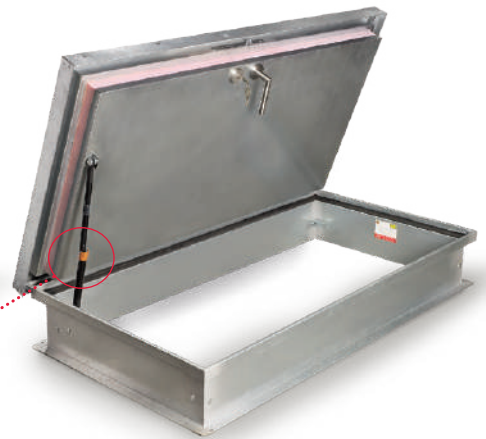
- **Ideal heat protection due to strong thermal insulation in the lower galvanized top cover**
- Multiple separated hatchcover frame according to requirements on site
- Several separate divider boxes according to the space situation
- Installation in ceiling cladding as well as special sizes possible
- High-quality, surrounding special seal
- Optional available in inox execution
- Low space requirement
- Electric drive available



Flat-roof hatch closed



Flat-roof hatch – top cover with pneumatic spring



Pneumatic spring locks in the open position

Combinable with different Wipro attic stair cases

Wipro flat-roof exits are the ideal solution for your home – also combinable with the Wipro attic staircase models Klimatec 160, Eurostep and all Isotec models.

**Flat-roof exit
also available
electrically
order upfront
(not refittable)**

Info: Connection and sealing work, as well as the alignment of the upstands on the appropriate height is to be done on site.

12 cm (≈ 4.7 inches) thick thermal insulation in the galvanized top cover

Maintenance work on flat roofs, solar panels, etc. quick and easy

Thermal insulation integrated in the top cover

Top cover locks air-tight optional with cylinder lock

6 to 20 cm (≈2.4 to 7.9 inches) thick thermal insulation in the lower cover

High quality galvanized

VARIABLE ADJUSTMENT
room heights
up to 3,20 m
(126 inches)
and higher

Easy handling due to pneumatic spring locks in the open position

When using a Wipro air tight set and correct installation, the flat roof exit corresponds to the Blower Door guidelines.



Wipro flat-roof exits are available in combination with different types of Wipro attic staircases. The heat transfer coefficient of the lower cover depends on the thermal insulation properties of the chosen Wipro attic staircase:

- **Klimatec 160:** Thermal insulation in the lower cover 16 cm (≈ 6.3 inches) more information p. 8 to 9
- **Isotec models:** Thermal insulation in the lower cover 10 - 20 cm (≈ 3.9 - 7.9 inches) more information on pages 7, 10 and 11
- **Eurostep:** Thermal insulation in the lower cover 6 cm (≈ 2.4 inches) more information p. 13

AZR Elevator machine room entrance

Cleaning and service made easy.

Type AZR is a tried and tested construction and serve as a step into the elevator machine room. This makes cleaning and service work particularly easy.

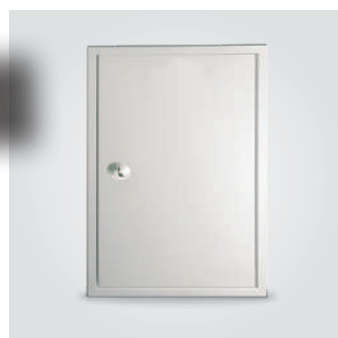
- **Non-slip, extra wide treads with 56 cm (≈22 inches) width x 12 cm (≈4.7 inches) depth**
- **Also available in model „Isotec“ with 10 cm (≈3.9 inches) thermal insulation**
- Easy operation thanks to telescopic handrail and spring support
- Thermal insulation by 6,5 cm (≈2.6 inches) high rockwool in the lower cover
- Recessed, lockable 2-sided rotary lock
- High-quality powder surface coating
- Encapsulating fire protection seal
- Three-part folding stairs
- Tilt angle according to regulation
- Including mounting accessories

**Ball-bearing,
wear-resistant
closing mechanism**



Inspection flaps Inspection doors

The clean solution for wall and ceiling installation. Made to individual design requirements.



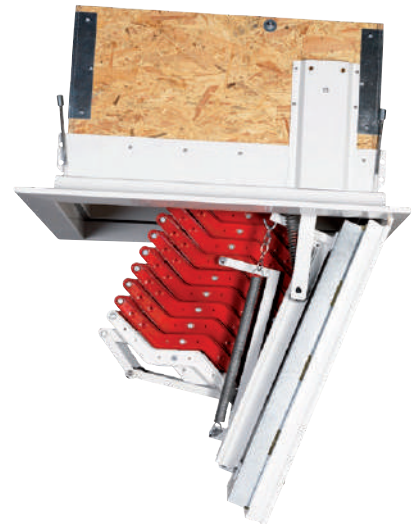
Inspection door for the ceiling installation, without stairs



Inspection flap for the ceiling installation, without stairs

The clever space-saving staircase.

- **Thermal insulation coefficient in the lower cover $U = 0,33 \text{ W/m}^2\text{K}$**
- 52 cm (≈20.5 inches) high frame made of high-quality wood material
- Stair treads with safety knobs, 32 x 10 cm (≈4.7 x 3.9 inches) (width x depth)
- High-quality powder-coated surface
- for ceiling opening 70 x 72 cm (≈27.6 x 28.3 inches) up to 100 x 100 cm (≈39.4 x 39.4 inches)
- 10 cm (≈3.9 inches) thermal insulation in the lower cover
- 10 cm (≈3.9 inches) high welded frame
- Recessed locking mechanism
- Gasket in lower cover
- Spring-assisted and ball bearing mechanism
- Encapsulating fire protection seal
- Internal swivel mechanism
- Double lip lower cover
- Including mounting accessories



Isotec Space
+
Wipro
top cover
(optional)



Thermal insulation coefficient in conjunction with the retrofittable Wipro top cover $U = 0,21 \text{ W/m}^2\text{K}$.

Heat protection covers

Custom made for retrofitting.

Wipro heat protection covers are the heat-insulating extensions for the non-insulated roof-top staircases and can be manufactured for every stair dimension and model. The assembly is carried out directly on the concrete or wooden ceiling.

- **MANUALLY** openable to the rear
- **Optional side opening possible**
- High-quality, encapsulating sealing for additional thermal insulation
- Wooden material frame is screwed on all-round linings
- Sealing frame is screwed on the stairway frames
- Two pneumatic springs as opening aid
- Adaptable support board
- Incl. assembly accessories

IDEAL FOR RENOVATION WORKS

also for the installation of different types of attic staircases



ADDITIONAL THERMAL INSULATION



Insulated top cover side opening



protective railing



laterally opening top cover depending on the spatial requirement available.



Payload up to 100 kg
when fitted as a thermally-insulated
door from the top

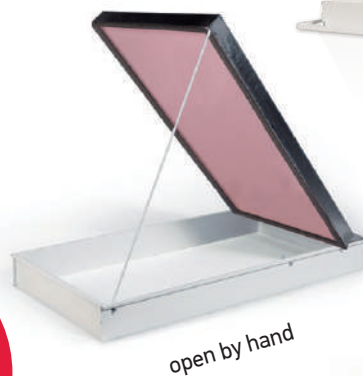
Top cover

Thermal insulation and protection – can be retrofitted at any time.

- **AUTOMATICALLY** openable to the rear **OR** sideways **MANUALLY**
- Prevents dusting of the stair parts on the roof
- Increases the insulation value of the attic staircase
- Suitable for all Wipro models – also without thermal insulation available



opens automatically



open by hand



open by hand, without insulation

Wipro
top cover
WITHOUT
thermal
insulation



opens automatically



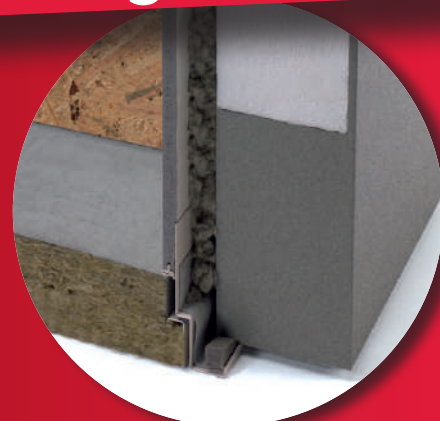
Wipro
top cover for
Isotec/Eurostep:
6 cm (≈2.4 inches)
thick thermal
insulation

Wipro® air-tight set

The professional airtight finish.

CONTENTS

- self-adhesive sealing tape
- swelling sealant
- bonding paste for sealing tape



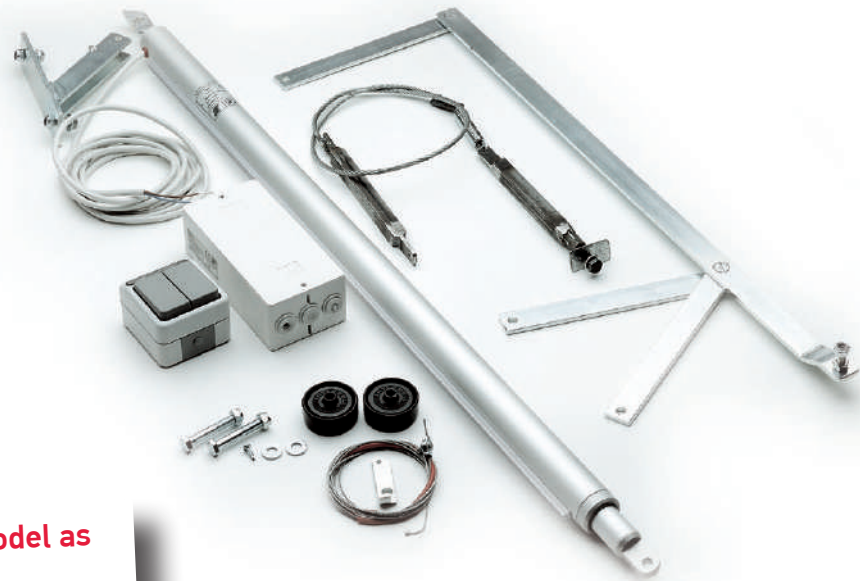
Electric drive

**NOT
RETROFITABLE**

Order
additionally now

Comfort at the touch of a button or via remote control.

Wipro attic staircases can be entirely opened or closed with the help of the electric drive – this is convenient and helps to save maximum energy through the best possible heat protection. Thanks to innovative technology from Wipro, comfort and environmental awareness can be easily combined.



Available for the Eurostep attic staircase model as well as the Isotec model.



**Flat-roof exit
also available
electrically
order upfront
(not refittable)**



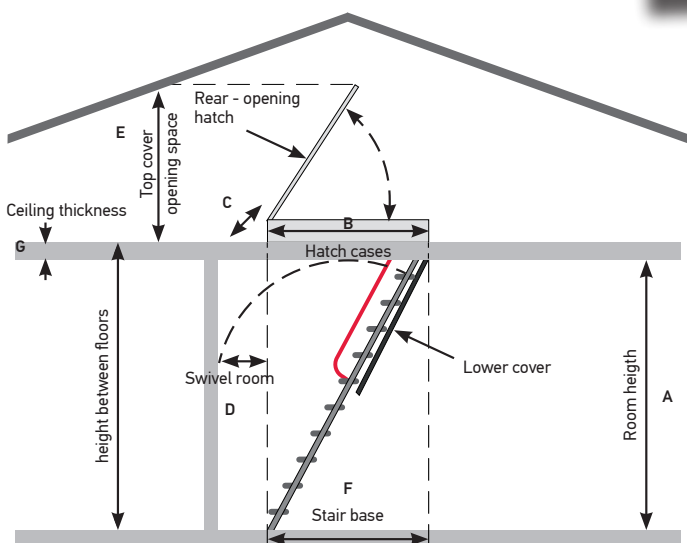
Remote control
also available



Wipro attic staircases

Technical data

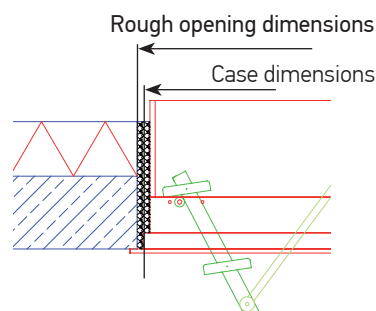
Any type can also come in special sizes!



My measures

Any type can also come in special sizes!

- A Room height
- B Rough opening length
- C Rough opening width
- D Swivel room
- E Top cover opening space
- F Staircase base
- G Ceiling thickness



All figures in cm

Type	Room height	Rough opening space	Swivel room (D)						Stair elements
			RH 250	RH 255	RH 260	RH 265	RH 270	RH 275	
Eurostep	255-275	140x70	x	38	35	32	27	23	3
	255-275	130x70	x	48	45	42	37	33	
	250-265	120x70	45	41	36	31	x	x	
	250-265	120x60	45	41	36	31	x	x	
	255-265	110x70	x	38	34	30	x	x	
Isotec	255-275	140x70	x	38	35	31	27	22	3
	255-275	130x70	x	48	45	41	37	32	
	250-265	120x70	44	40	35	29	x	x	
	250-265	120x60	44	40	35	29	x	x	
	255-265	110x70	x	38	34	29	x	x	
Luxe	255-275	140x70	x	38	34	31	27	22	3
	255-275	130x70	x	48	44	41	37	32	
	250-265	120x70	43	39	35	29	x	x	
	250-265	120x60	43	39	35	29	x	x	
	255-265	110x70	x	37	33	29	x	x	
Isotec 200	250-270	140x70	36	33	29	24	19	x	3
	250-260	130x70	41	36	31	x	x	x	
	250-265	120x70	33	30	26	21	x	x	
	250-265	120x60	33	30	26	21	x	x	
Klimatec 160	250-275	140x70	38	34	31	27	22	17	3
	250-265	130x70	42	38	34	28	x	x	
	250-265	120x70	36	33	29	25	20	x	
	250-265	120x60	36	33	29	25	20	x	

Figures in inches (Dimensions in Inches are approximately for information)

Room height	Rough opening space	Swivel room (D)						Stair elements
		RH 250	RH 255	RH 260	RH 265	RH 270	RH 275	
100-108	55x28	x	15	14	13	11	9	3
100-108	51x28	x	19	18	17	15	13	
98-104	47x28	18	16	14	12	x	x	
98-104	47x24	18	16	14	12	x	x	
100-104	43x28	x	15	13	12	x	x	
100-108	55x28	x	15	14	12	11	9	3
100-108	51x28	x	19	18	16	15	13	
98-104	47x28	17	16	14	11	x	x	
98-104	47x24	17	16	14	11	x	x	
100-104	43x28	x	15	13	11	x	x	
98-106	55x28	14	13	11	9	7	x	3
98-102	51x28	16	14	12	x	x	x	
98-104	47x28	13	12	10	8	x	x	
250-265	47x24	13	12	10	8	x	x	
98-108	55x28	15	13	12	11	9	7	3
98-104	51x28	17	15	13	11	x	x	
98-104	47x28	14	13	11	10	8	x	
98-104	47x24	14	13	11	10	8	x	

Top cover set for retrofitting

Rough opening dimensions*		Eurostep	Isotec / Isotec 200	Klimatec
cm	≈inches			
140 x 70	55 x 28	ADH-E, HOD-E	ADH-I, HOD-I	ADH-I, HOD-I
130 x 70	51 x 28	ADH-E, HOD-E	ADH-I, HOD-I	ADH-I, HOD-I
120 x 70	47 x 28	ADH-E, HOD-E	ADH-I, HOD-I	ADH-I, HOD-I
110 x 70	43 x 28	ADH-E, HOD-E	ADH-I, HOD-I	ADH-I, HOD-I
120 x 60	47 x 24	ADH-E, HOD-E	ADH-I, HOD-I	ADH-I, HOD-I

* External box size – in addition, the frame mirror must be observed, which forms a clean end to the ceiling.

Multi-purpose cabinets

powder-coated

As an office cabinet, for workshops or in the garage – Wipro multi-purpose cabinets make a great impression.

The simple, but extremely precise execution and the flexible interior make practically any application possible for the storage space wonder. Whether folders, office items or cleaning material – order is easily achieved with the suitable shelves. For liquid containing uses in workshops and garages – there are also liquid-tight inserts in the form of a vat, which are also suitable for the storage of cleaning agents, chemicals, oil etc.

- **Size 95 x 40 x 195 cm** (≈ 37.4 x 15.7 x 76.8 inches)
(Width x depth x height)
- Compartments every 5 cm (≈ 2 inches) possible, height adjustable
- Lockable with two keys
- Internal hinges
- White powder coating
- All-metal construction
- Recessed doors
- Incl. 4 compartments



Comes

welded & assembled

Example

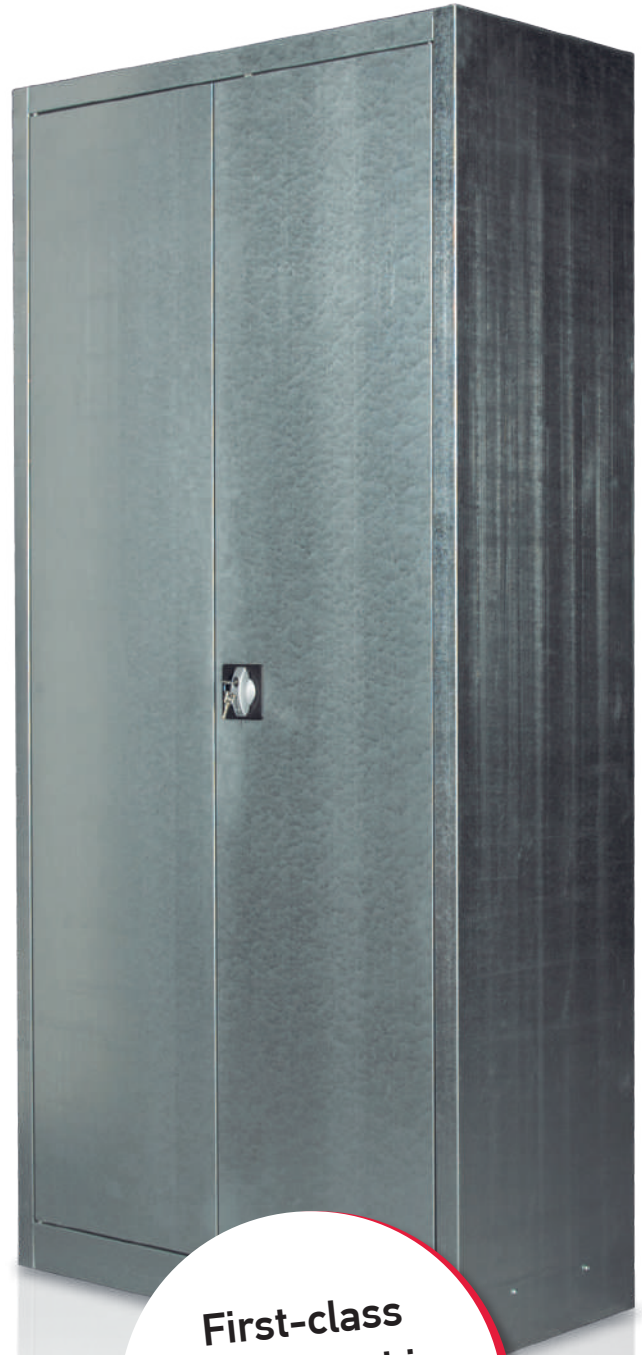


Multi-purpose cabinets

galvanized

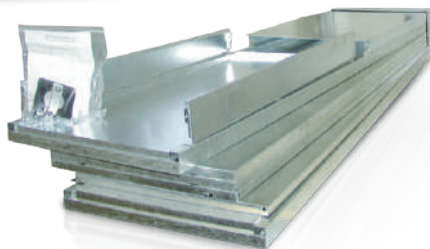
- Compartments every 5 cm (≈2 inches) possible, height adjustable
- Lockable with two keys
- Internal hinges
- Galvanized surface
- All-metal construction
- Recessed doors
- Incl. 4 compartments

W/D/H
95 x 43,5 x 195 cm
(≈37.4 x 17.1 x 76.8 inches)



Comes

disassembled & packed for transport



First-class
craftsmanship
made in Austria

Sliding doors

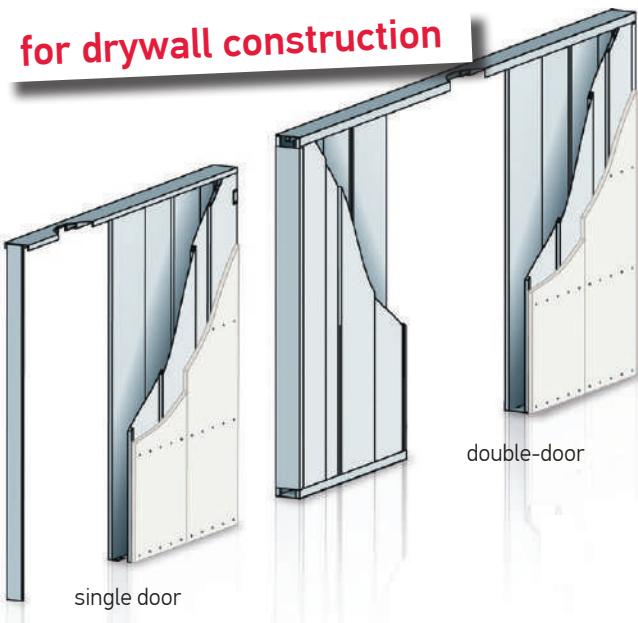
single or double door

Individual production in highest quality.

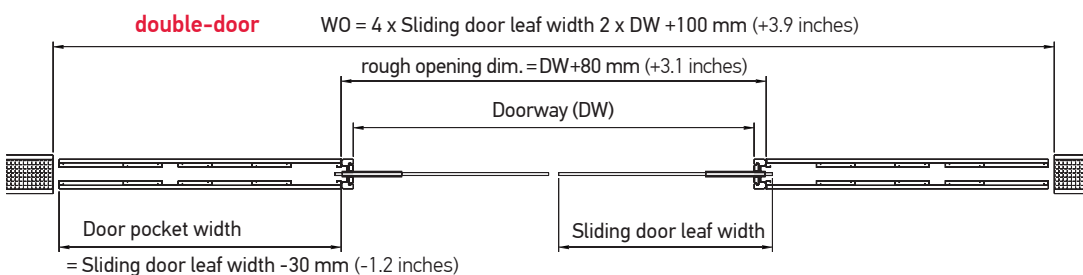
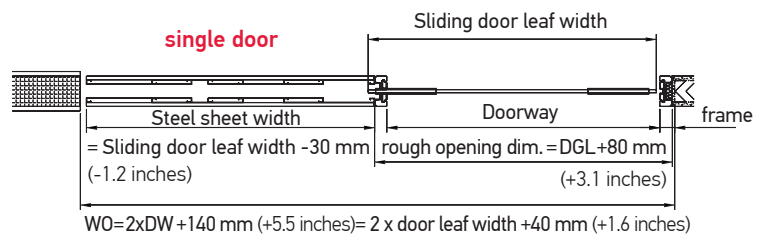
Wipro Sliding door pockets made of galvanized steel sheet can be made individually for EVERY wall opening and ALL wall thicknesses from 12,5 cm (≈4.9 inches). The high-quality, maintenance-free aluminum light rail for sliding doors has stoppers and rollers. It is enclosed with the sliding door system and is built in.



for drywall construction



for plaster construction

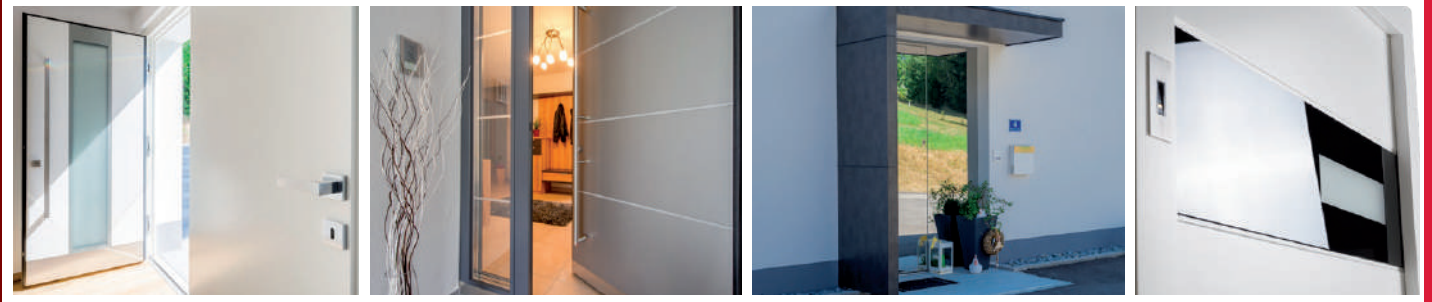
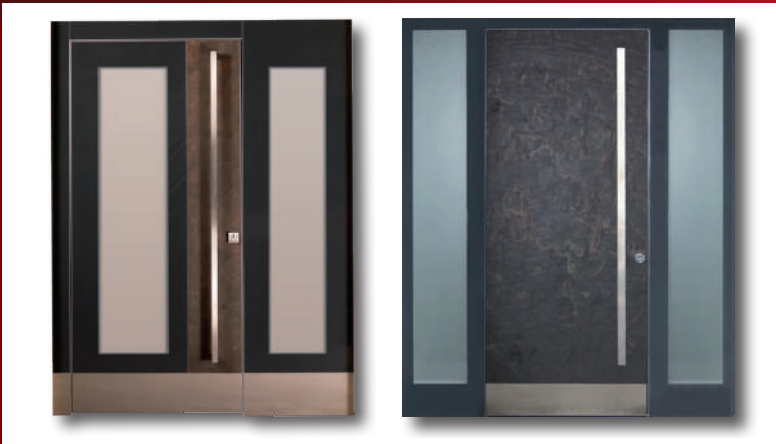


WO ... Wall opening
DW ... Doorway

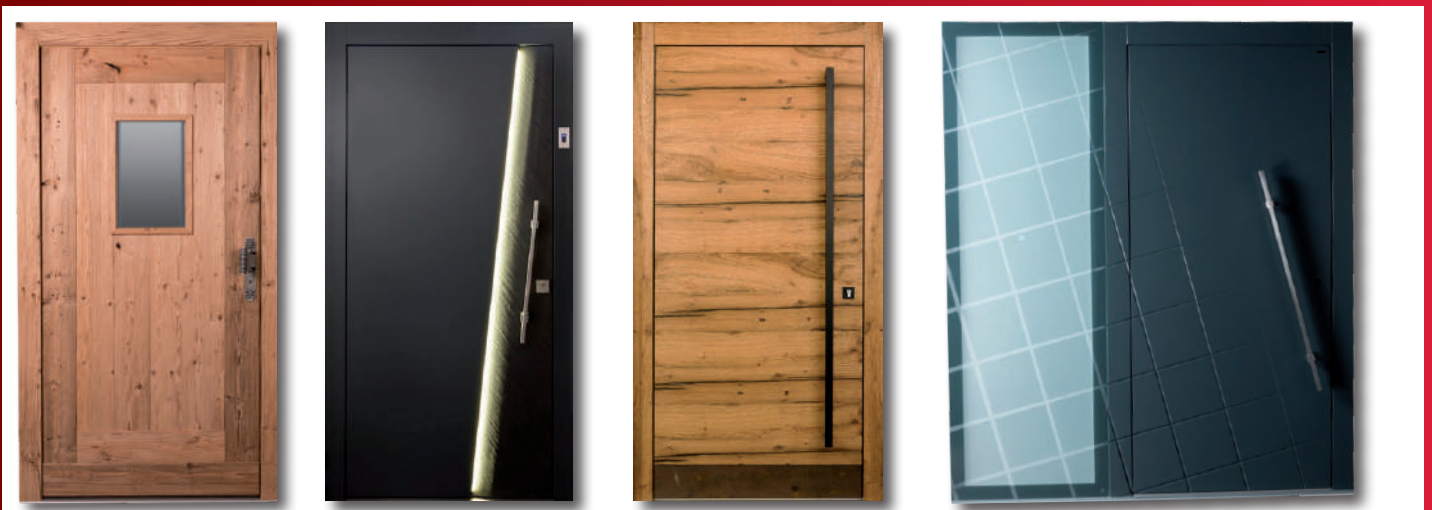


Wipro

Custom made front doors

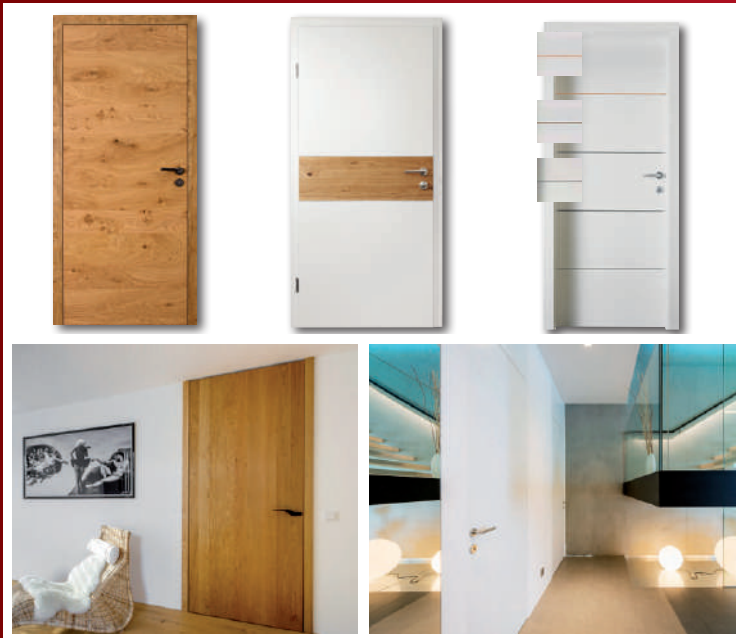
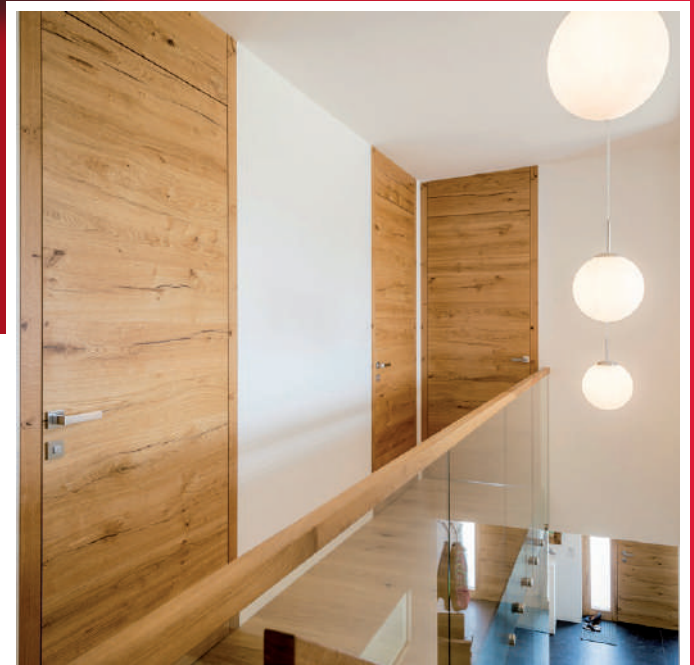


Wipro front doors are manufactured according to the latest technical standards. High-quality surface coating on the exterior can be adapted to the façade whilst having the interior oriented on the room design. Discreet milling, INOX applications, noble glazing, individual design elements or complete panels with optically interesting materials such as natural stone, steel, ceramic or concrete are optional.



Wipro interior doors

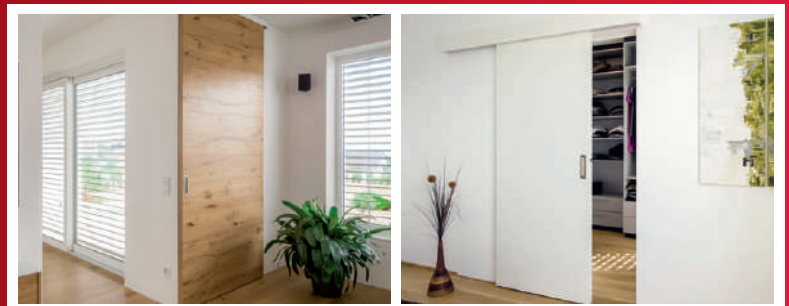
High-quality material combinations and styles – from modern to classic to the new Alpin edition. The color and shape of interior doors have a decisive influence on the harmonious feeling indoors.



Sliding doors & space saving doors

Wipro sliding doors are available both in front of the wall as well as inside of it – in solid wood, glass or all-glass versions.

Space saving, turning and swinging doors require only about 40% of the swivel space of a conventional door.



Wipro showroom



Wipro factory showroom Vorderweissenbach (Austria)



NEW: Wipro showroom Vomp Tyrol (Austria)



Wipro showroom Vienna (Austria)



Wipro showroom Munich (Germany)

www.wipro.com

YES, I would like to ...

*...ensure my surprise gift
from Wipro!*





Wipro door and staircases factory
in Vorderweissenbach

Wipro factory showroom Vorderweissenbach

Gewerbestr. 2 | A-4191 Vorderweissenbach
Tel.: +43 7219 700 40 | E-Mail: info@wipro.at

Opening hours:

Monday to Friday from 8.00–12.00 and 13.00–17.00

Wipro showroom Vienna

Sagedergasse 8 | A-1120 Vienna
Tel.: +43 1 804 877 511 | E-Mail: wien@wipro.at

Opening hours:

Monday to Friday from 9.00–12.00 and 13.00–18.00

Saturday from 9.00–12.00 July/August each 1st Sa. of the month from 9.00–12.00

Wipro showroom Vomp

Au 41 | A-6134 Vomp
Tel.: +43 5242 222 02 | E-Mail: vomp@wipro.at

Opening hours:

Monday to Friday from 9.00–12.00 and 13.00–17.30

Wipro showroom Munich

Benzstr. 5a | D-85551 Kirchheim by Munich
Tel.: +49 89 90 41 01 161 | E-Mail: info@wipro.de

Opening hours:

Monday to Friday from 8.30–12.00 and 13.00–17.00

Saturday from 9.00–12.00 July/August each 1st Sa. of the month from 9.00–12.00

Your Wipro partner

Wipro GmbH | Gewerbestr. 2 | A-4191 Vorderweissenbach | Tel.: +43 7219 700 40 | Fax: +43 7219 7004 76 | E-Mail: info@wipro.at

Please cut off here

YES, I would like to pick up a surprise gift as part of a free consultation in the Wipro showroom of my choice.

Vorderweissenbach Vienna Munich Vomp

YES, please send me the free Wipro door catalog for

Exterior entrance doors Interior doors Sliding doors & room partitions

FIRST AND LAST NAME:*

ADDRESS:*

E-MAIL/TEL.:

*) Obligatory disclosures. Voucher valid when sending a fully completed card until 31.12.2019. The legal process is excluded. No barracing. By sending my data, I agree to its use for marketing purposes of the Wipro GmbH.

Find our privacy policy on www.wipro.com



Postage remedied by recipient

Wipro GmbH

Gewerbestr. 2

A-4191 Vorderweissenbach

AUSTRIA

Edition 03 | 2019. Subject to corrections, typographic and printing errors, colour variations due to printing techniques, technical changes possible at any time.